



**CCF2E30-600**



H75-H120

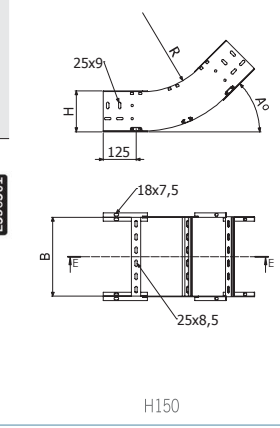
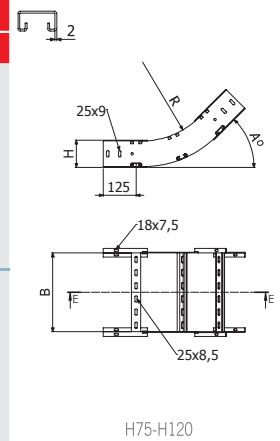


H150



	A		R		B		H		GC	
	°	mm	inch	mm	inch	mm	inch	REF.	kg/ud	
CCF2E30-600 100X100X2	30	600	24"	100	4"	100	4"	2/16388	2,83	
CCF2E30-600 150X100X2	30	600	24"	150	6"	100	4"	2/16389	3,06	
CCF2E30-600 200X100X2	30	600	24"	200	8"	100	4"	2/16390	3,29	
CCF2E30-600 300X100X2	30	600	24"	300	12"	100	4"	2/16391	3,74	
CCF2E30-600 400X100X2	30	600	24"	400	16"	100	4"	2/16392	4,20	
CCF2E30-600 500X100X2	30	600	24"	500	20"	100	4"	2/16393	4,66	
CCF2E30-600 600X100X2	30	600	24"	600	24"	100	4"	2/16394	5,11	
CCF2E30-600 150X120X2	30	600	24"	150	6"	120	4 5/7"	2/16395	3,49	
CCF2E30-600 200X120X2	30	600	24"	200	8"	120	4 5/7"	2/16396	3,72	
CCF2E30-600 300X120X2	30	600	24"	300	12"	120	4 5/7"	2/16397	4,17	
CCF2E30-600 400X120X2	30	600	24"	400	16"	120	4 5/7"	2/16398	4,63	
CCF2E30-600 500X120X2	30	600	24"	500	20"	120	4 5/7"	2/16399	5,09	
CCF2E30-600 600X120X2	30	600	24"	600	24"	120	4 5/7"	2/16400	5,54	
CCF2E30-600 150X150X2	30	600	24"	150	6"	150	6"	2/16401	4,15	
CCF2E30-600 200X150X2	30	600	24"	200	8"	150	6"	2/16402	4,37	
CCF2E30-600 300X150X2	30	600	24"	300	12"	150	6"	2/16403	4,83	
CCF2E30-600 400X150X2	30	600	24"	400	16"	150	6"	2/16404	5,29	
CCF2E30-600 500X150X2	30	600	24"	500	20"	150	6"	2/16405	5,74	
CCF2E30-600 600X150X2	30	600	24"	600	24"	150	6"	2/16406	6,20	

2 x JUFE



**CCF2E45-600**



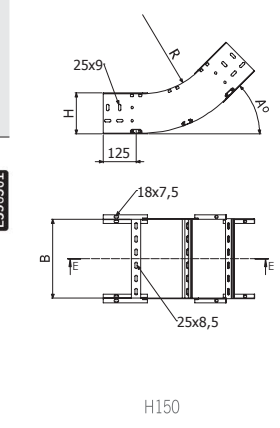
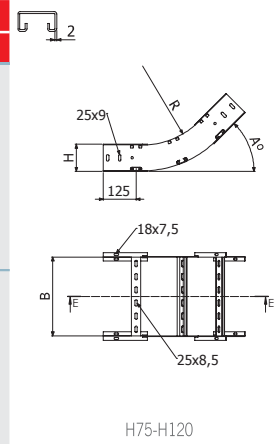
H75-H120



H150

	A		R		B		H		GC	
	°	mm	inch	mm	inch	mm	inch	REF.	kg/ud	
CCF2E45-600 100X100X2	45	600	24"	100	4"	100	4"	2/16414	3,53	
CCF2E45-600 150X100X2	45	600	24"	150	6"	100	4"	2/16415	3,83	
CCF2E45-600 200X100X2	45	600	24"	200	8"	100	4"	2/16416	4,14	
CCF2E45-600 300X100X2	45	600	24"	300	12"	100	4"	2/16417	4,74	
CCF2E45-600 400X100X2	45	600	24"	400	16"	100	4"	2/16418	5,35	
CCF2E45-600 500X100X2	45	600	24"	500	20"	100	4"	2/16419	5,96	
CCF2E45-600 600X100X2	45	600	24"	600	24"	100	4"	2/16420	6,57	
CCF2E45-600 150X120X2	45	600	24"	150	6"	120	4 5/7"	2/16421	4,38	
CCF2E45-600 200X120X2	45	600	24"	200	8"	120	4 5/7"	2/16422	4,68	
CCF2E45-600 300X120X2	45	600	24"	300	12"	120	4 5/7"	2/16423	5,29	
CCF2E45-600 400X120X2	45	600	24"	400	16"	120	4 5/7"	2/16424	5,90	
CCF2E45-600 500X120X2	45	600	24"	500	20"	120	4 5/7"	2/16425	6,51	
CCF2E45-600 600X120X2	45	600	24"	600	24"	120	4 5/7"	2/16426	7,12	
CCF2E45-600 150X150X2	45	600	24"	150	6"	150	6"	2/16427	5,22	
CCF2E45-600 200X150X2	45	600	24"	200	8"	150	6"	2/16428	5,53	
CCF2E45-600 300X150X2	45	600	24"	300	12"	150	6"	2/16429	6,14	
CCF2E45-600 400X150X2	45	600	24"	400	16"	150	6"	2/16430	6,74	
CCF2E45-600 500X150X2	45	600	24"	500	20"	150	6"	2/16431	7,35	
CCF2E45-600 600X150X2	45	600	24"	600	24"	150	6"	2/16432	7,96	

2 x JUFE





**CCF2E60-600**



H75-H120

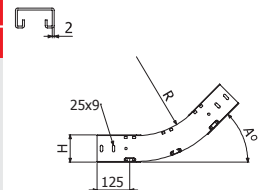


H150

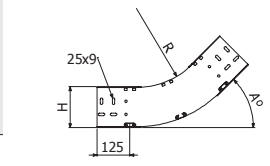


	A		R		B		H		GC	
	°	mm	inch	mm	inch	mm	inch	REF.	kg/ud	
CCF2E60-600 100X100X2	60	600	24"	100	4"	100	4"	2/16440	4,07	
CCF2E60-600 150X100X2	60	600	24"	150	6"	100	4"	2/16441	4,38	
CCF2E60-600 200X100X2	60	600	24"	200	8"	100	4"	2/16442	4,68	
CCF2E60-600 300X100X2	60	600	24"	300	12"	100	4"	2/16443	5,29	
CCF2E60-600 400X100X2	60	600	24"	400	16"	100	4"	2/16444	5,90	
CCF2E60-600 500X100X2	60	600	24"	500	20"	100	4"	2/16445	6,50	
CCF2E60-600 600X100X2	60	600	24"	600	24"	100	4"	2/16446	7,11	
CCF2E60-600 150X120X2	60	600	24"	150	6"	120	4 5/7"	2/16447	5,04	
CCF2E60-600 200X120X2	60	600	24"	200	8"	120	4 5/7"	2/16448	5,35	
CCF2E60-600 300X120X2	60	600	24"	300	12"	120	4 5/7"	2/16449	5,96	
CCF2E60-600 400X120X2	60	600	24"	400	16"	120	4 5/7"	2/16450	6,56	
CCF2E60-600 500X120X2	60	600	24"	500	20"	120	4 5/7"	2/16451	7,17	
CCF2E60-600 600X120X2	60	600	24"	600	24"	120	4 5/7"	2/16452	7,78	
CCF2E60-600 150X150X2	60	600	24"	150	6"	150	6"	2/16453	6,30	
CCF2E60-600 200X150X2	60	600	24"	200	8"	150	6"	2/16454	6,68	
CCF2E60-600 300X150X2	60	600	24"	300	12"	150	6"	2/16455	7,44	
CCF2E60-600 400X150X2	60	600	24"	400	16"	150	6"	2/16456	8,20	
CCF2E60-600 500X150X2	60	600	24"	500	20"	150	6"	2/16457	8,96	
CCF2E60-600 600X150X2	60	600	24"	600	24"	150	6"	2/16458	9,72	

2 x JUFE



H75-H120



H150

**CCF2E-600**



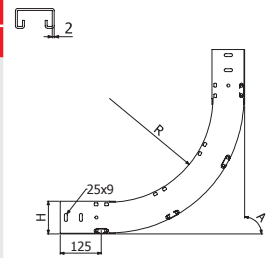
H75-H120



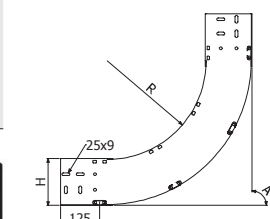
H150

	A		R		B		H		GC	
	°	mm	inch	mm	inch	mm	inch	REF.	kg/ud	
CCF2E-600 100X100X2	90	600	24"	100	4"	100	4"	2/16466	5,47	
CCF2E-600 150X100X2	90	600	24"	150	6"	100	4"	2/16467	5,92	
CCF2E-600 200X100X2	90	600	24"	200	8"	100	4"	2/16468	6,38	
CCF2E-600 300X100X2	90	600	24"	300	12"	100	4"	2/16469	7,29	
CCF2E-600 400X100X2	90	600	24"	400	16"	100	4"	2/16470	8,20	
CCF2E-600 500X100X2	90	600	24"	500	20"	100	4"	2/16471	9,11	
CCF2E-600 600X100X2	90	600	24"	600	24"	100	4"	2/16472	10,03	
CCF2E-600 150X120X2	90	600	24"	150	6"	120	4 5/7"	2/16473	6,83	
CCF2E-600 200X120X2	90	600	24"	200	8"	120	4 5/7"	2/16474	7,28	
CCF2E-600 300X120X2	90	600	24"	300	12"	120	4 5/7"	2/16475	8,20	
CCF2E-600 400X120X2	90	600	24"	400	16"	120	4 5/7"	2/16476	9,11	
CCF2E-600 500X120X2	90	600	24"	500	20"	120	4 5/7"	2/16477	10,02	
CCF2E-600 600X120X2	90	600	24"	600	24"	120	4 5/7"	2/16478	10,93	
CCF2E-600 150X150X2	90	600	24"	150	6"	150	6"	2/16479	8,22	
CCF2E-600 200X150X2	90	600	24"	200	8"	150	6"	2/16480	8,68	
CCF2E-600 300X150X2	90	600	24"	300	12"	150	6"	2/16481	9,59	
CCF2E-600 400X150X2	90	600	24"	400	16"	150	6"	2/16482	10,50	
CCF2E-600 500X150X2	90	600	24"	500	20"	150	6"	2/16483	11,42	
CCF2E-600 600X150X2	90	600	24"	600	24"	150	6"	2/16484	12,33	

2 x JUFE



H75-H120



H150